

Drillmaster



Drillmaster
CNC Drilling and Cutting line
Structural Steel

High quality solutions in manufacturing of steel construction

Drillmaster

Drilling, Tapping, Milling, Scribing & Cutting

The DRILLMASTER is a fully integrated MULTI spindle CNC controlled drilling line, designed for processing of beams and shaped rolled sections. They can be executed with one, two or three drilling spindles. The CNC controlled In-feed conveyor will position the profiles thru the drilling station. The automatic hydraulic double jaw vice, will clamp the material in both horizontal and vertical position. The full option, three spindle machines are executed with an additional Z-axis allowing simultaneous and independent control of each individual spindle over 500mm stroke, without repositioning the beam, increasing flexibility and productivity.

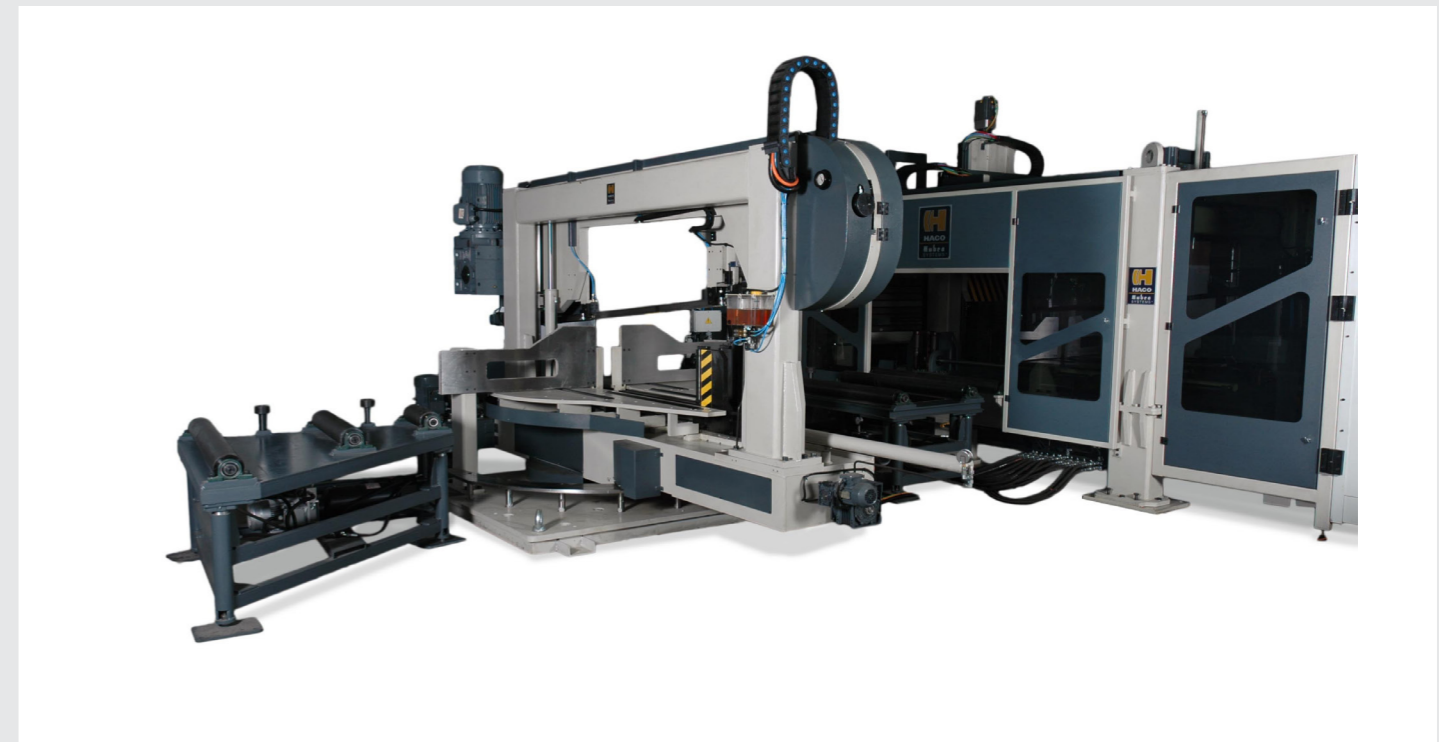


Quality,
reliability,
productivity

Optional Horizontal Bandsaw

The perfect solution for structural works

The automatic Mitre cutting, Horizontal Bandsaw Machine, can be optionally integrated into the CNC system. It can mitre cut on a 45 degree left angle and 60 degree right angle. During the automated cutting process controlled via the DRILLMASTER operator control, the material is fed through the machine. For a straight cut, the machine will automatically start cutting after the feeder has reached the required position. For a mitre cut, the large CNC controlled turn table, driven by a servo motor, will turn the table to the desired cutting angles.



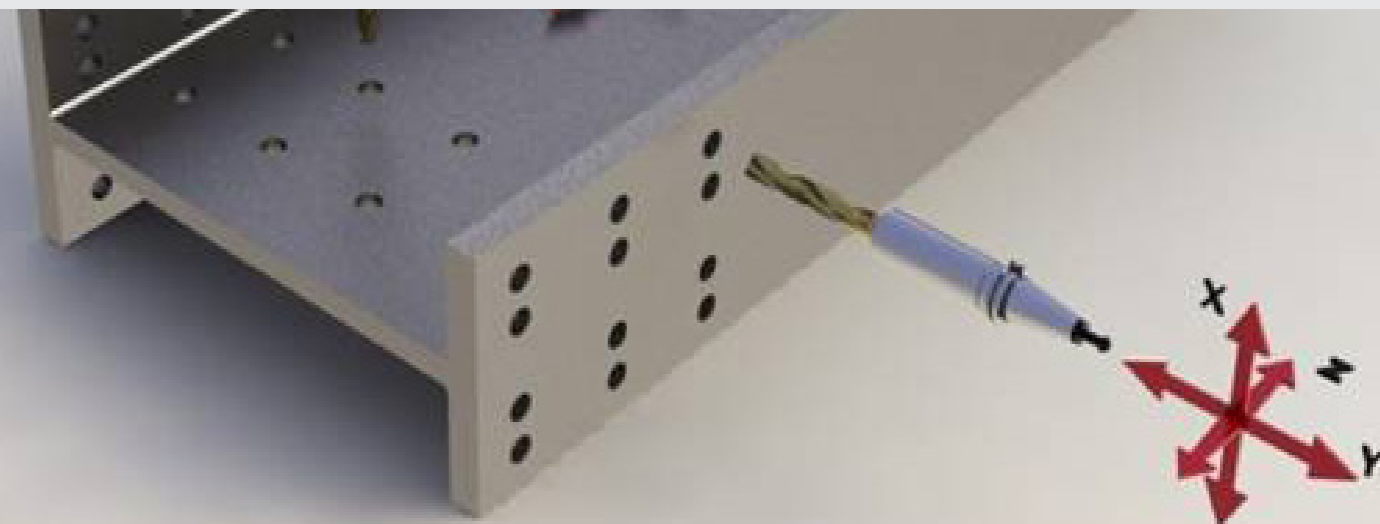
HIGH QUALITY SOLUTIONS

The Haco CNC Drilling and Cutting lines provide high quality solutions in manufacturing of beams and shaped rolled sections (Beams, Angles, flats, Channels,...)

Used in major sectors such as General Steel Manufacturers, Bridge manufacturers, Tower manufacturers, Truck and Crane manufacturers, they offer greatly enhanced productivity, efficiency and reduced processing time in just one operation.

All our Drilling lines can simultaneously drill, tap, scribe and mill and all spindles are standard manufactured with an Automatic tool changer.

The optional CNC controlled horizontal bandsaw will cut your profiles to size.

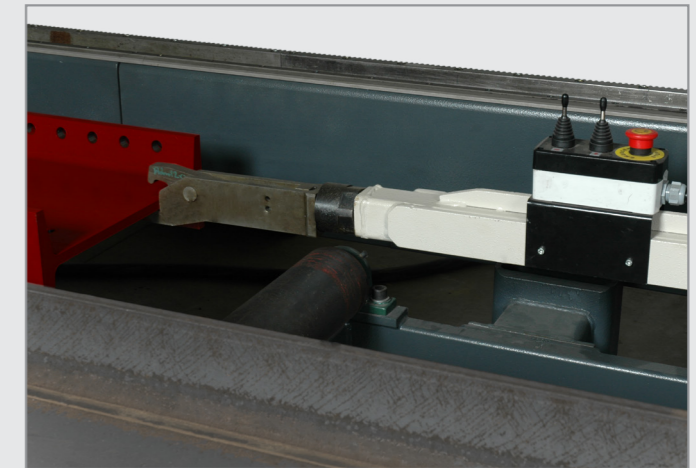
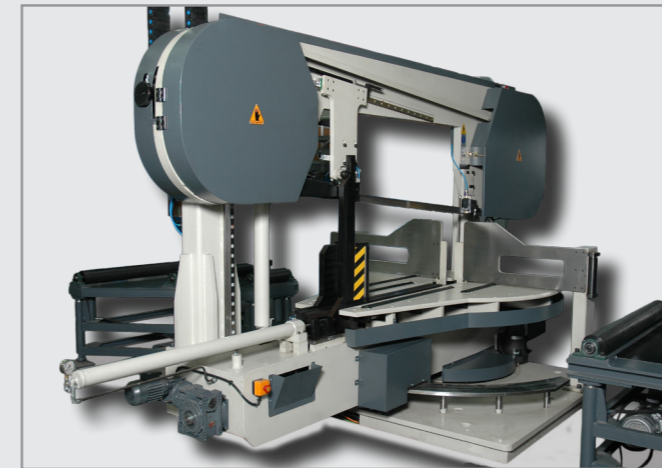
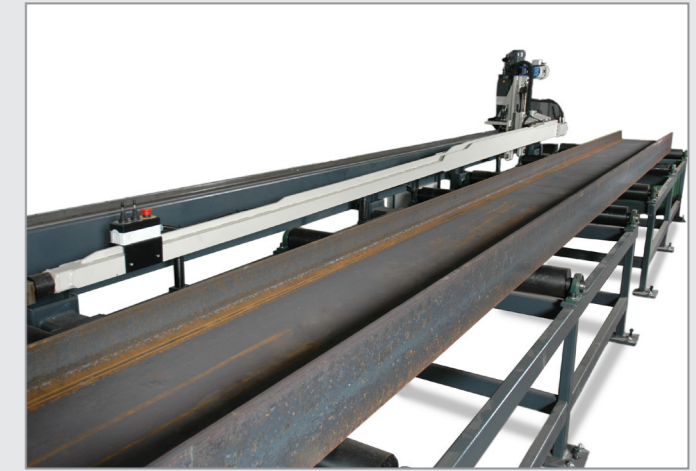


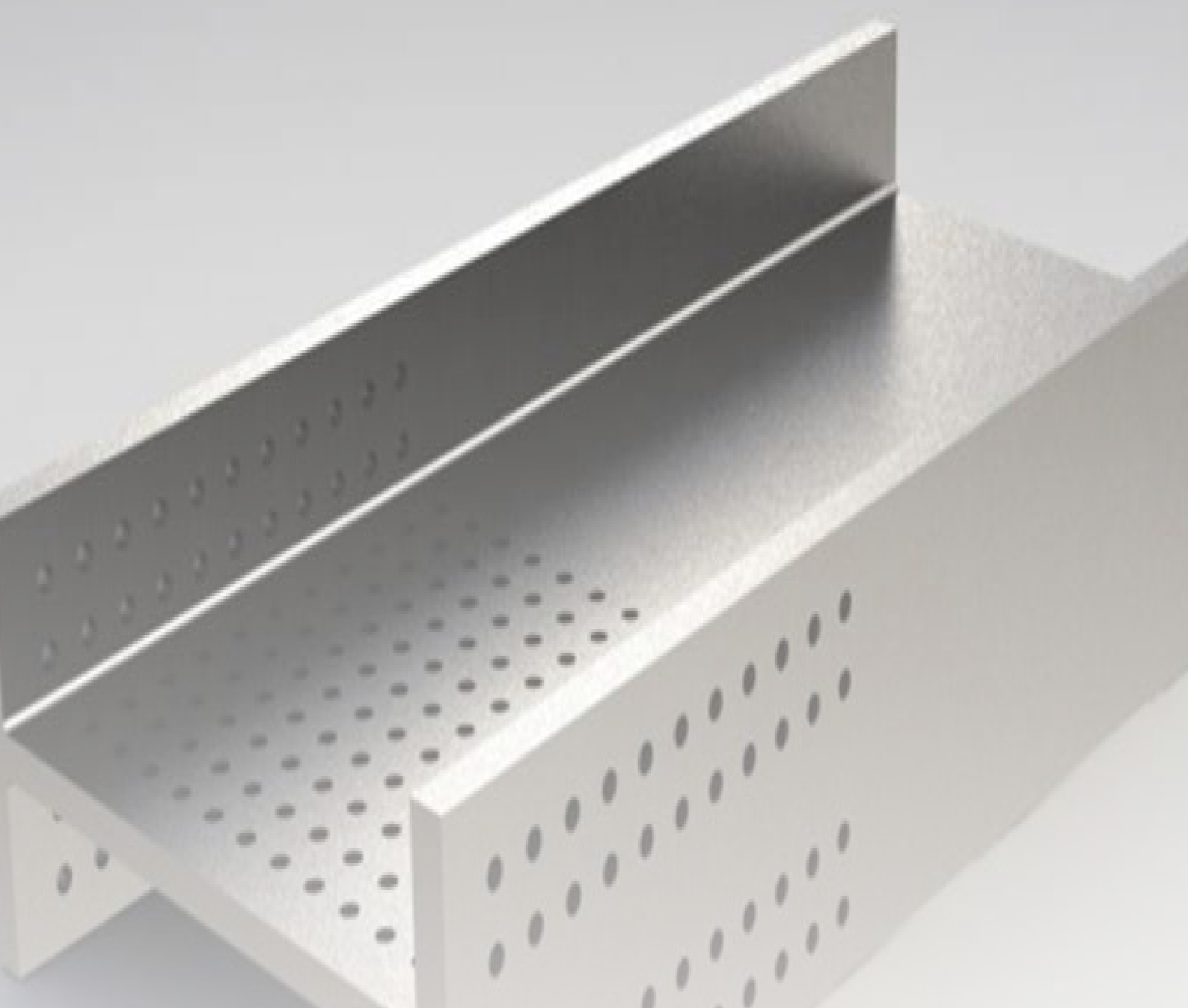


Drillmaster

Technical Specifications

Type	DM 1202	DM 1203
ADM Drillmaster Series		
Control Panel	Siemens 840D Solution line	Siemens 840D Solution line
Vertical spindle	1	1
Horizontal spindle	2	2
Additional Z-axis allowing simultaneous and independent control of each individual spindle over 500mm stroke, without repositioning the beam. Increasing flexibility and productivity.	NO	YES
Drilling diameter	10 - 40mm 52 Kg/mm ² tensile strength	10 - 40mm 52 Kg/mm ² tensile strength
Tapping diameter:	M6-M30	M6-M30
Drilling feed rate:	20-1000mm/min	20-1000mm/min
Countersink feature	YES	YES
Scribing feature (tool not included)	YES	YES
Maximum Drilling thickness	Changes according to drill type (l/d)	Changes according to drill type (l/d)
Spindle speeds	10 – 3500 rpm, adjustable (step-less).	10 – 3500 rpm, adjustable (step-less).
Spindle Motor Power	26 kW	26 kW
Spindle Fast Approach / Return Speed	15000 mm/min.	Tool internal cooling; compressed air + cooling water pulverized
H - Beam Width Max/Min H - Beam Height Max/ min	1200 / 85mm 500 / 80mm.	1200 / 85mm 500 / 80mm.
Automatic Tool Changing Unit (ATC)	1 ATC with 4 tools for each spindle.	1 ATC with 4 tools for each spindle.
Working height	800 mm	800 mm
Input Conveyor Length, CNC Servo driven	12000mm Optional 16000mm or 20000mmm	12000mm Optional 16000mm or 20000mmm
Output Conveyor Length with motorized rolls	12000mm Optional 16000mm or 20000mmm	12000mm Optional 16000mm or 20000mmm
Central Lubrication System	Standard	Standard
TOOL COOLING 1. Cooling Fluid / Air Micro Spray System for external cooling. 2. Cooling fluid / air micro spray system from inside of the tool (spindle unit) for the internal cooling.	STANDARD Internal or external cooling can be selected from panel manually or from program automatically.	STANDARD Internal or external cooling can be selected from panel manually or from program automatically.
Maximum linear weight of the section	500 Kg/m	500 Kg/m
Swarf Container	Standard	Standard
Automatic Cross section measuring	Standard	Standard
D.O.T. Marking	Optional	Optional
Mitre cutting band saw	Optional	Optional
Scribing Marking	On one side	On each side





CNC Punching Machines



CNC Guillotine Shears



CNC Plasma Cutting Machines

Melbourne
70 Yellowbox Drv
Craigieburn, VIC, 3064
Ph: +61 (0)3 8339 4377
Fx: +61 (0)3 8339 4877
sales@hacoaustralia.com.au

Drillmaster
CNC Driling and cutting line
Structural steel