



# HFL-X Series

## Hurricane Series

### Plat Cutting Machine

• X3015

# HFL-X1510 Performance Parameters

The standard width | **X3015** 3050mm\*1550mm



X/Y axis positioning accuracy **0.03mm/m**

X/Y axis repeat positioning accuracy **± 0.03mm**

Max Speed **120m/min**

Max Acceleration **1.5G**

Recommended power range **1.5KW~4KW**

# Fully enclosed structure

- ◆ **Safety protection:**  
Fully protected enclosed design and OD6+ glass can prevent laser radiation from damaging the retina

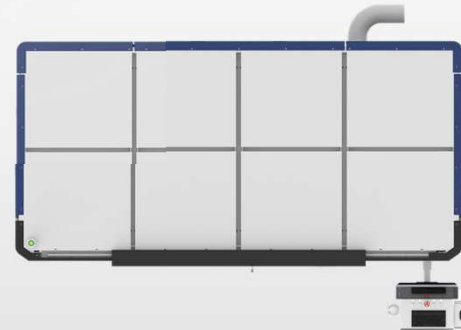
- ◆ **Green and healthy:**  
Multi-area and small area ventilation and dust removal has a good effect



Front Viewing



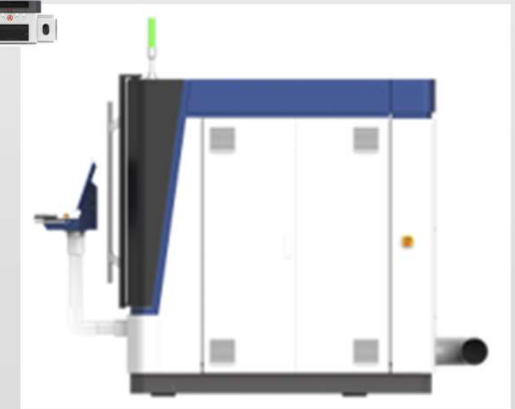
Left Viewing



Top Viewing



Back Viewing



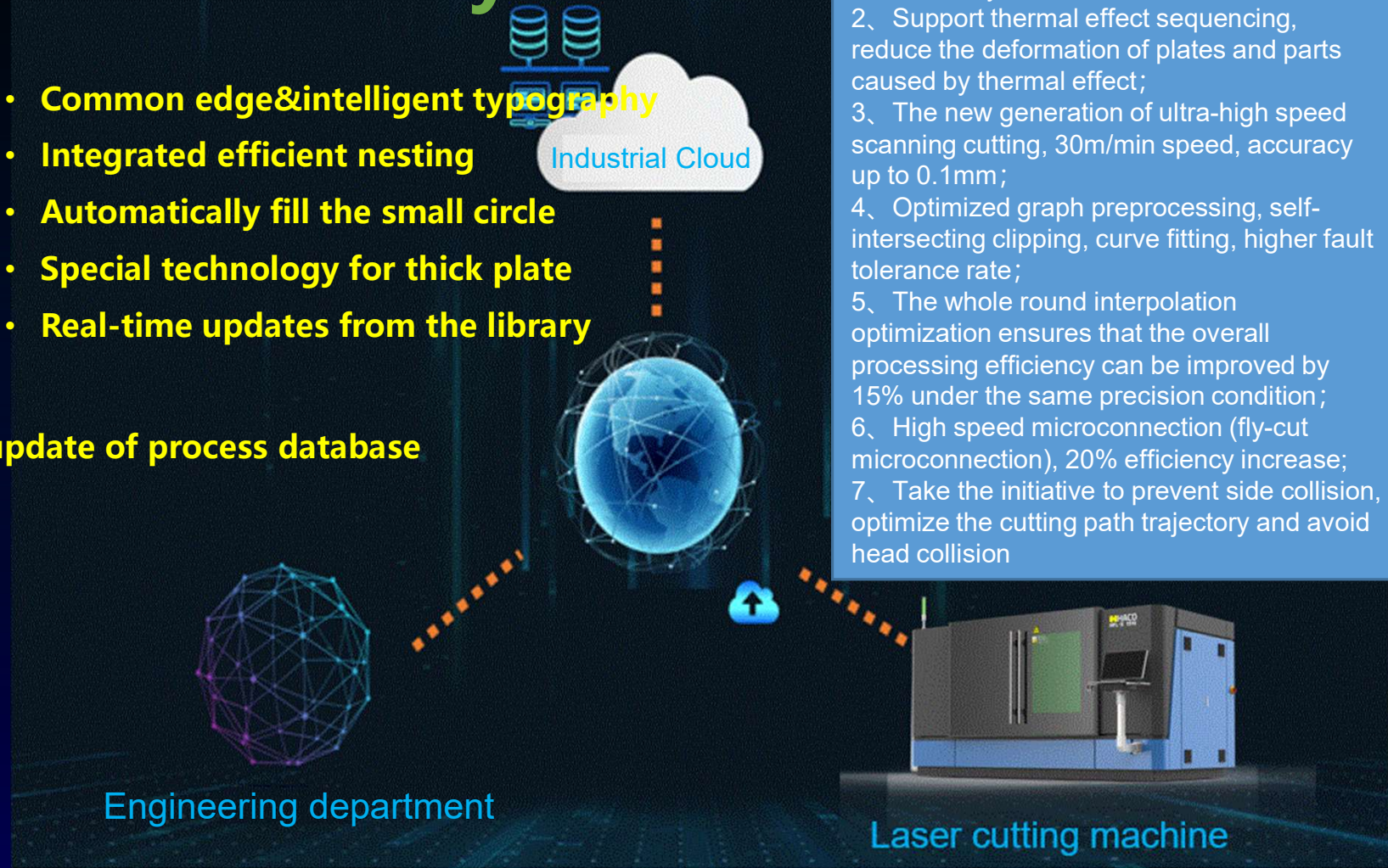
Right Viewing

# Intelligent cloud bus system

## ◆ ALPHAT1.0 Bus System:

- Common edge&intelligent typography
- Integrated efficient nesting
- Automatically fill the small circle
- Special technology for thick plate
- Real-time updates from the library

## ◆ Cloud System: Real-time update of process database



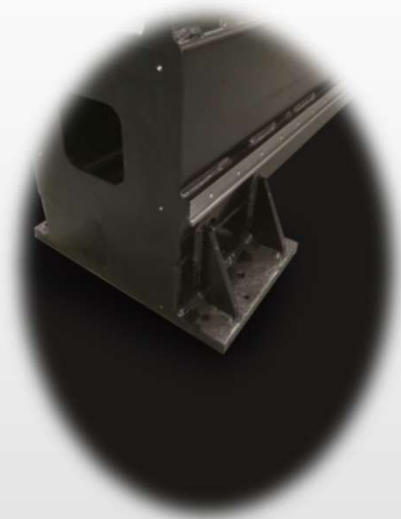
- 1、 Optimized integrated nesting: number of parts increased to 500, layout efficiency increased by 20%, the plate utilization rate increased by 10%;;
- 2、 Support thermal effect sequencing, reduce the deformation of plates and parts caused by thermal effect;
- 3、 The new generation of ultra-high speed scanning cutting, 30m/min speed, accuracy up to 0.1mm;
- 4、 Optimized graph preprocessing, self-intersecting clipping, curve fitting, higher fault tolerance rate;
- 5、 The whole round interpolation optimization ensures that the overall processing efficiency can be improved by 15% under the same precision condition;
- 6、 High speed microconnection (fly-cut microconnection), 20% efficiency increase;
- 7、 Take the initiative to prevent side collision, optimize the cutting path trajectory and avoid head collision

## Plate welding Bed

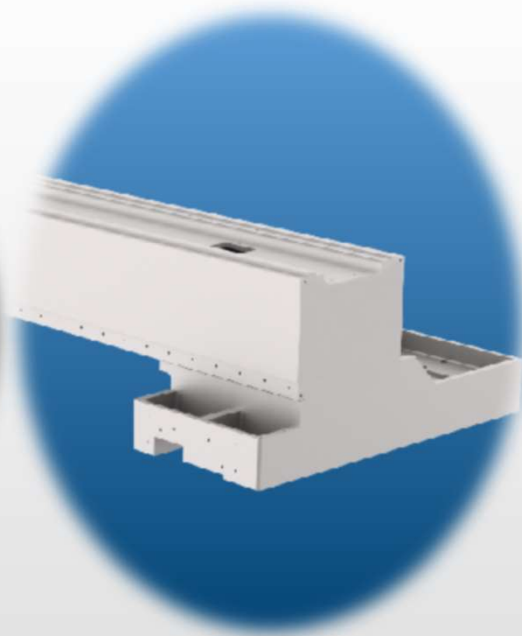
- ◆ **Good structural rigidity**
- ◆ **High Stability**
- ◆ **Not deform for a long time**
- ◆ **Favorable guarantee of cutting accuracy**



# EVOLUTION OF BEAMS



• 1st - generation iron welded beam



• **4th - generation extruded aluminum beam**



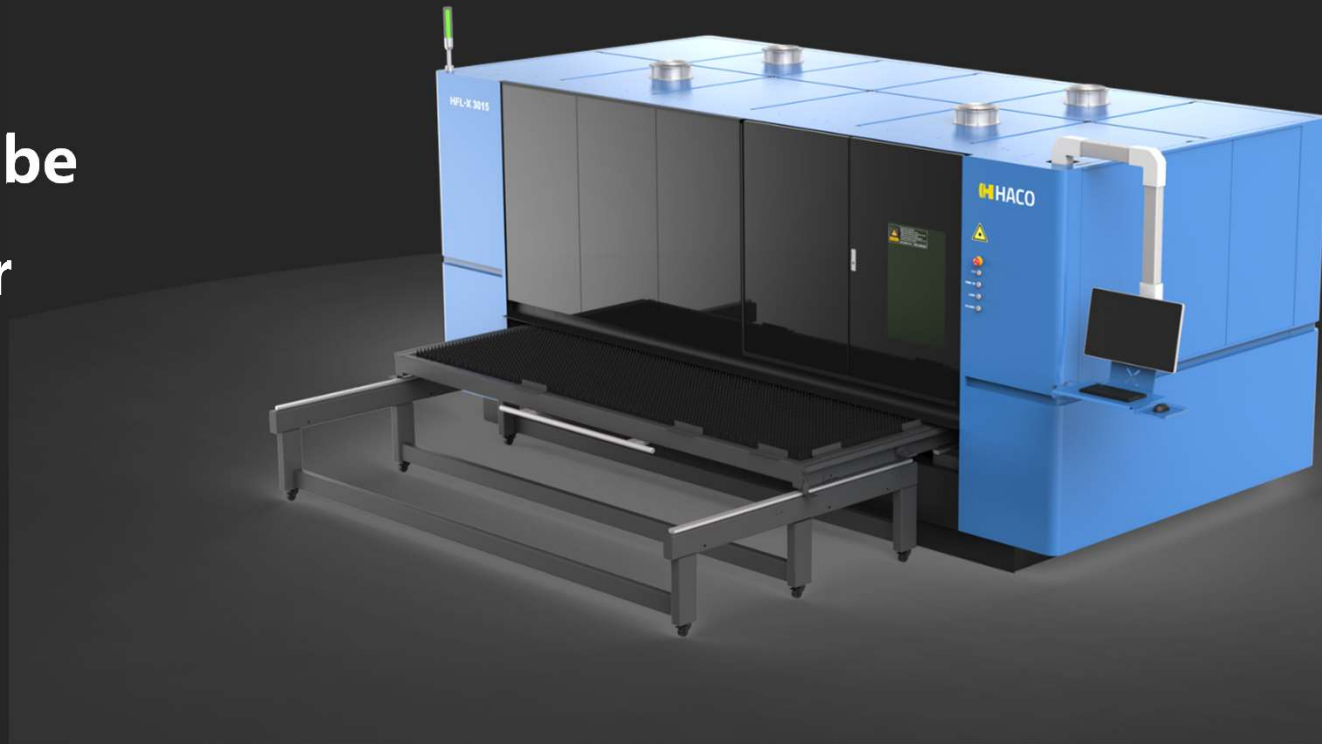
• 2nd-generation sand cast aluminum beam



• 3rd-generation die cast aluminum beam

# New revolution of worktable

Half of the platform can be pulled out for loading and unloading purpose



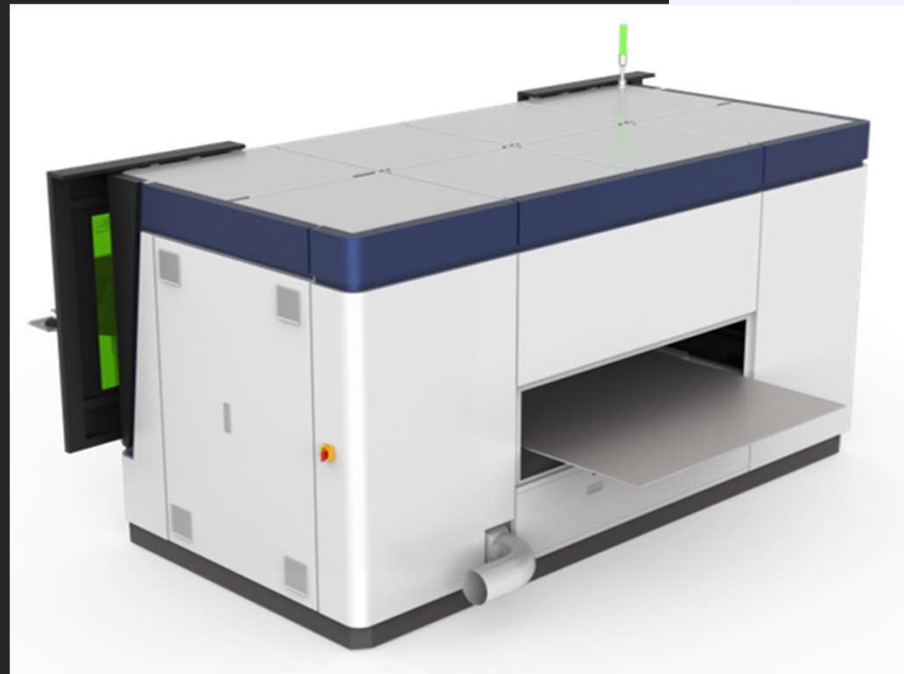
# New revolution of worktable

Long materials

can be loaded

from the back of

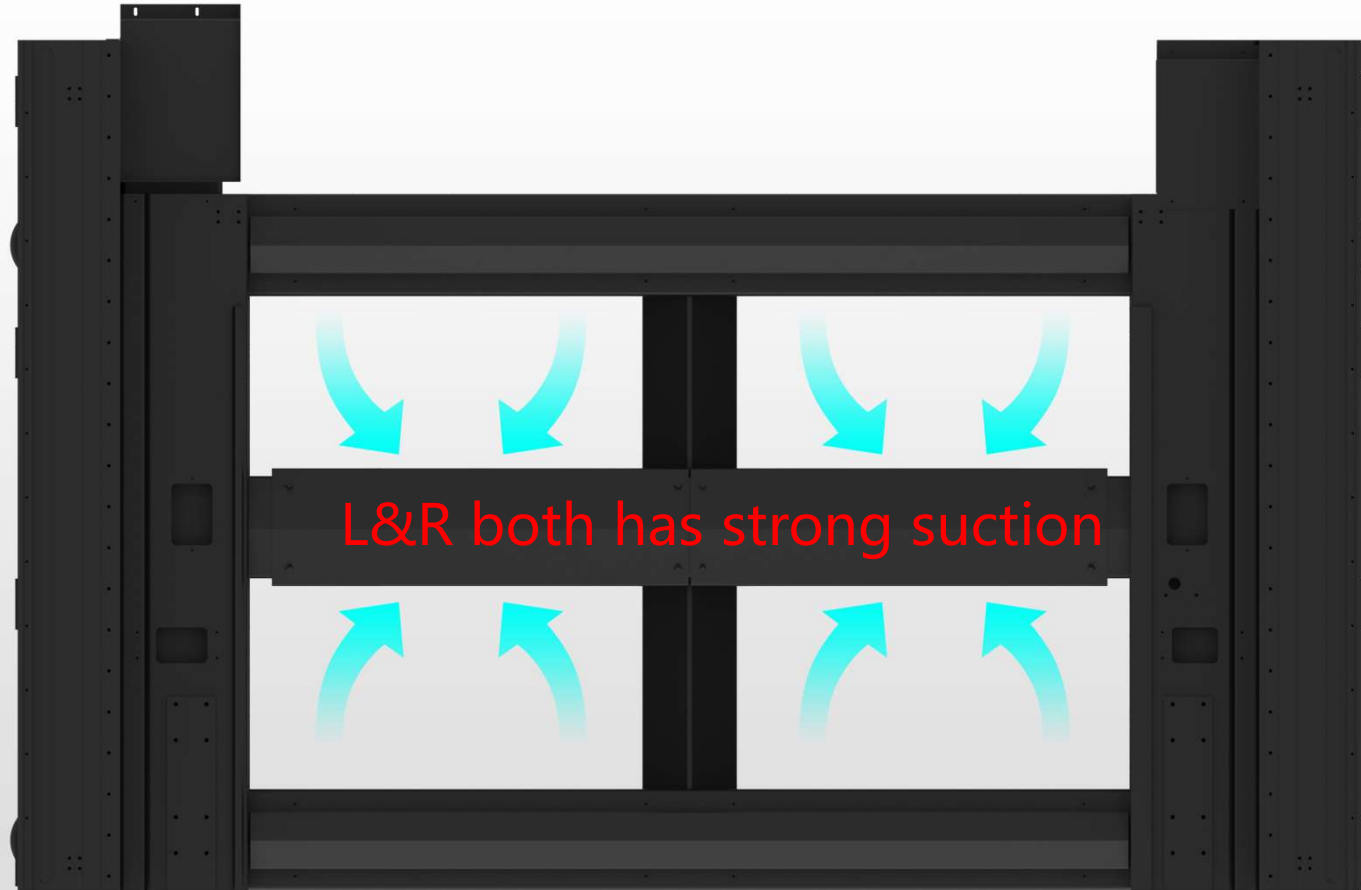
the machine





# Zone Fume extraction

Hurricane  
Ventilation



**Manganese steel anti-burning,**

**no fear of high power, long-term use without deformation**

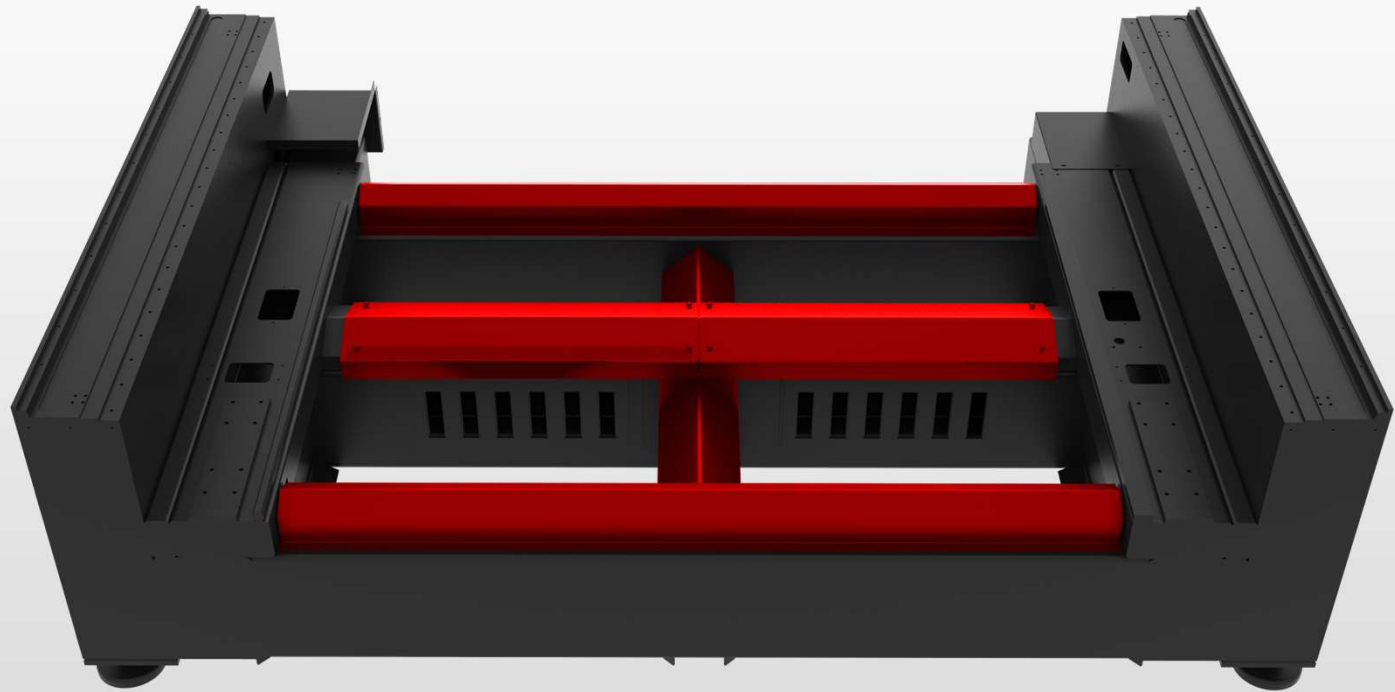
## Heat Burn Prevention

Manganese steel covers the entire cutting area,

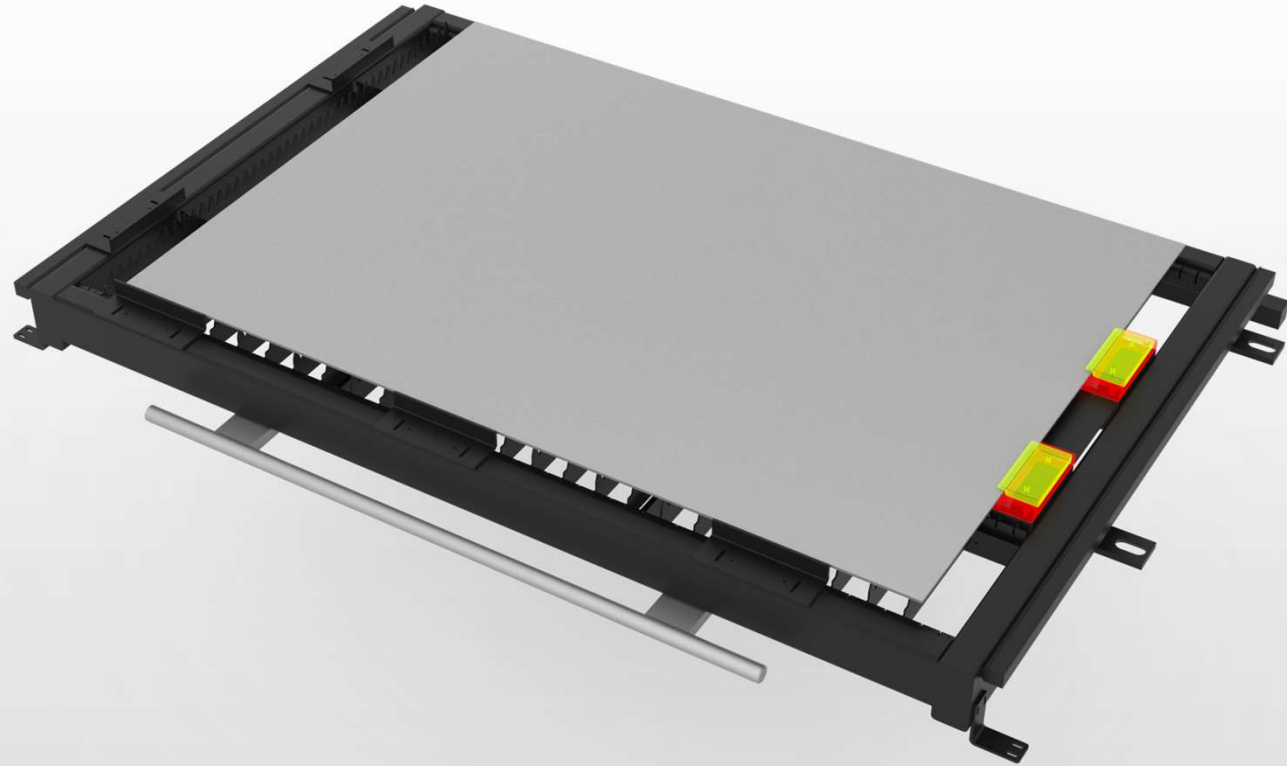
**Smashing resistance and high temperature resistance**

Effective protection of the middle steel plate of the bed,

**The service life of machine bed is longer**



**Table clamps  
are adopted to  
prevent  
vibration for  
cutting thin  
plates**



THANK  
YOU!

